

SHADEVIEW MESH





SHADEVIEW CLASSIC

1X1 CONSTRUCTION

CODE	WIDTH - CM	ROLL LENGTH - M	WEIGHT - GSM
SV305	305	25	550

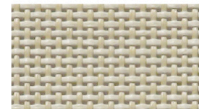
Shadeview Classic has a unique woven design that will shade your home, office or entertaining area whilst retaining a high level of visibility. Shadeview Classic can be railroaded for the ultimate blind or awning with no vertical joins. Enjoy letting the light and cool air into your home whilst filtering out up to 90% of the sun's damaging ultra violet rays. Shadeview Classic is ideally suited for external awnings, alfresco blinds and shade sails.

PRODUCT FEATURES

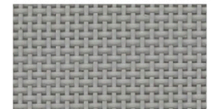
- 10% Openness
- 1x1 Construction
- Reduces up to 90% of the sun's harmful rays
- Optimal ventilation and air flow
- High quality, UV resistant construction
- Mildew resistant
- Fire retardant additives
- Weldable
- Controls reflected glare
- Railroad
- 10 year warranty for screens
- 5 year warranty for shade sail (horizontal application)



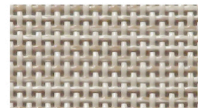
SNOWCAP
SV305SNOWCAP



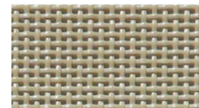
WHEAT
SV305WHEAT



DUSK
SV305DUSK



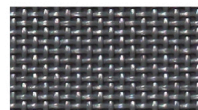
DESERT
SV305DESERT



BEIGE
SV305BEIGE



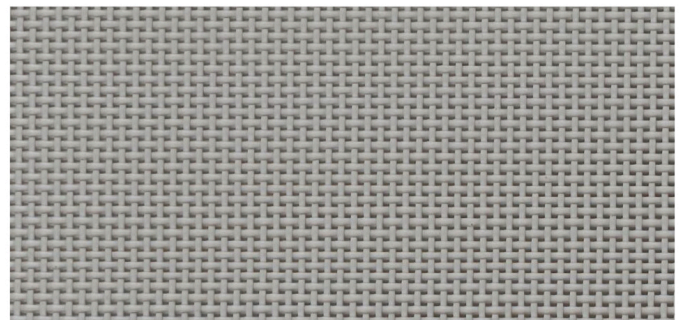
CHOCOLATE
SV305CHOC



SLATE
SV305SLATE



BLACK
SV305BLACK



1X1 CONSTRUCTION



SHADEVIEW URBAN

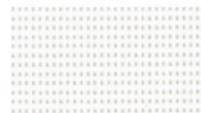
2X2 CONSTRUCTION

CODE	WIDTH - CM	ROLL LENGTH - M	WEIGHT - GSM
SV300	300	25	570

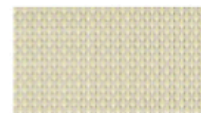
Shadeview Urban is a multifunctional fabric for external shading ideally suited to straight drop alfresco blinds and awnings, with a 3 metre width allowing for a join free blind. It is a great alternative for those considering PVC alfresco blinds as it offers effective protection from the elements all year around. Shadeview Urban is also highly suited to those harsh west facing windows that need the extra protection that only a 5% openness fabric can deliver.

PRODUCT FEATURES

- 5% Openness
- 2 x 2 construction
- Reduces up to 95% of the sun's harmful rays
- Optimal ventilation and air flow
- High quality, UV resistant construction
- Reduces cooling costs
- Mildew resistant
- Provides shade and privacy
- Fire retardant additives
- Weldable
- Controls reflected glare
- 10 year warranty for screens
- 5 year warranty for shade sail (horizontal application)



ICEBERG
SV300ICEBERG



PUTTY
SV300PUTTY



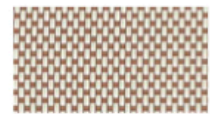
QUARTZ
SV300QUARTZ



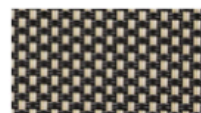
PEWTER
SV300PEWTER



MUSHROOM
SV300MUSHROOM



ALMOND
SV300ALMOND



SUEDE
SV300SUEDE



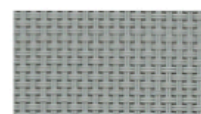
HAVANA
SV300HAVANA



BRACKEN
SV300BRACKEN



MARBLE
SV300MARBLE



STONE
SV300STONE



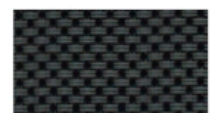
FLINT
SV300FLINT



STATIC
SV300STATIC



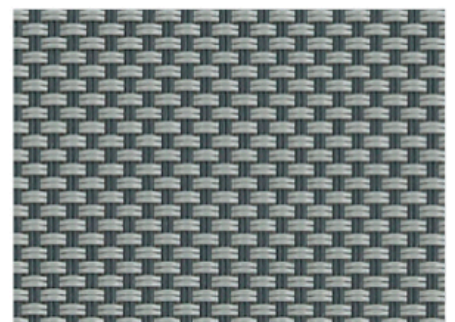
GRAPHITE
SV300GRAPHITE



CARBON
SV300CARBON



GALAXY
SV300GALAXY



2X2 CONSTRUCTION - FLINT



SHADEVIEW EXTREME

BROKEN TWILL CONSTRUCTION

CODE	WIDTH - CM	ROLL LENGTH - M	WEIGHT - GSM
SVX320	320	20	560

As the name suggests this outdoor fabric has gone to the extreme. This unique fabric has been developed to provide you with clarity and protection from the elements. Black mesh is easier to see through, however black doesn't complement all exterior colour ranges. Shadeview Extreme is a fabric that has been designed with this in mind with one side black for clarity and view and the other side in a range of fashion colours to suit your home. Shadeview Extreme can combat the environments harsh elements through its unique broken twill weave, giving it greater attributes than any other mesh on the market, while still providing quality and style.

PRODUCT FEATURES

- 3% Openness
- Broken twill construction
- Reduces up to 97% of the sun's harmful rays
- Minimal ventilation and air flow
- High quality, UV resistant construction
- Dual colour
- Mildew resistant
- Fire retardant additives
- Weldable
- Controls reflected glare
- 10 year warranty for screens
- 5 year warranty for shade sail (horizontal application)



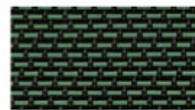
PEBBLE STONE
SVX320PEBBLESTONE



ALPACA
SVX320ALPACA



EARTH
SVX320EARTH



EMERALD
SVX320EMERALD



SAPPHIRE
SVX320SAPPHIRE



ASH
SVX320ASH



BLACK
SVX320BLACK



BROKEN TWILL CONSTRUCTION

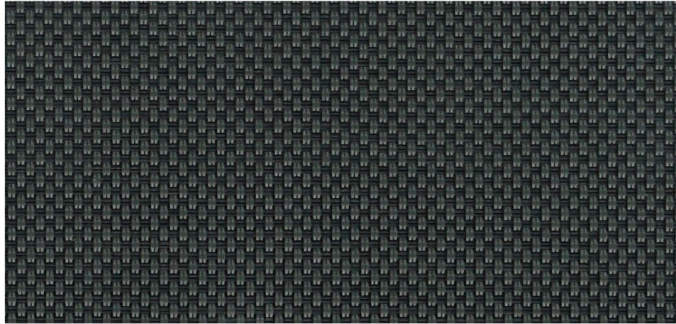
FRONT | BACK

SHADEVIEW ONE

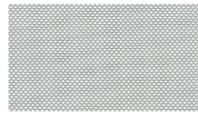
2X2 CONSTRUCTION

CODE	WIDTH - CM	ROLL LENGTH - M	WEIGHT - GSM
SVU300	300	25	615

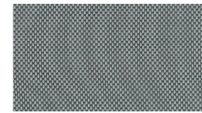
The 1% openness of Shadeview One ensures optimal shielding from the elements while preserving scenic vistas, making it perfect for alfresco blinds, awnings, or shading your entertainment area. Filter out up to 99% of harmful UV rays, creating a serene ambiance while enjoying superior sun protection. Built to last, Shadeview One's durable construction guarantees longevity and performance.



COAL DUST



LIMESTONE
SVONE300LIMESTONE



BOULDER
SVONE300BOULDER



GUNMETAL
SVONE300GUNMETAL



COAL DUST
SVONE300COALDUST



MIDNIGHT
SVONE300MIDNIGHT

PRODUCT FEATURES

- 1% Openness
- 70% PVC, 30% Polyester
- Reduces up to 99% of the sun's harmful rays
- Optimal ventilation and air flow
- High quality, UV resistant construction
- Reduces cooling costs
- Mildew resistant
- Provides shade and privacy
- Fire retardant additives
- Weldable
- Controls reflected glare
- 10 year warranty for screens
- 5 year warranty for shade sail (horizontal application)



palmer canvas

Palmercanvas.co.nz